

# F-35 B Lightning II

No 1425 model kit  
modèle réduit

STOVL version



1:72  
scalascale

## Perfection is visible

### F-35 B Lightning II STOVL Version

4 versions: 1  2  1 

The JSF Joint Strike Fighter program was set up to develop a new fifth-generation all-weather multirole combat aircraft able to replace the existing United States and NATO strike-fighters. The aerospace industry team led by Lockheed Martin generated the single-seat, single-engine, F-35 Lightning II. It adopts stealth technology and it is characterized by the trapezoidal wings and by the use of the most advanced hi-tech materials and avionic systems. Developed to perform air superiority, close air support and ground attack missions, it has been design in different configurations. The F-35B thanks to its STOVL (Short Take Off and Vertical Landing) capabilities has been designed to operate from aircraft carriers such as the British H.M.S. Queen Elizabeth or the Cavour, flagship of the Italian Navy. The U.S Marines Corps plans to adopt the F-35B to perform attack and ground support duties. The STOVL version is characterised by the adoption of the Pratt & Whitney afterburning turbofan and the swivel nozzle that directs the thrust of the engine. Thanks to its operational flexibility, the advanced on-board technology and the impressive project innovation, the F-35 lightning II will be a reference aircraft in the twenty-first century military aviation.

### Model kit features:

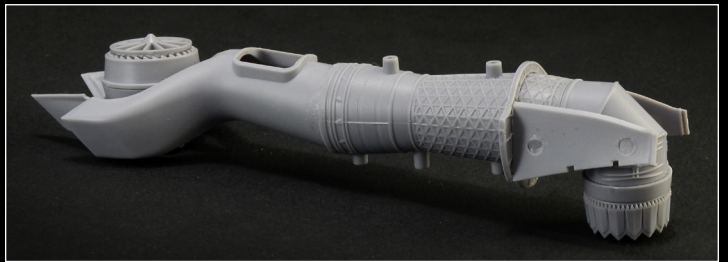
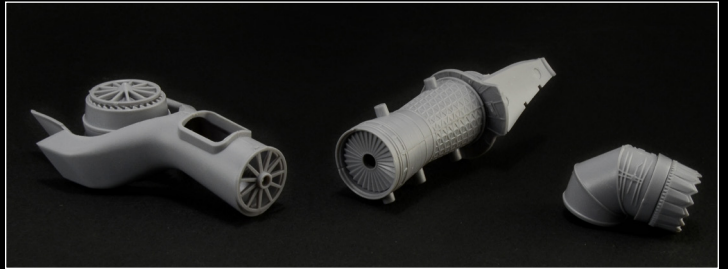
- **Hight Quality kit**
- **Engine with two thrust Nozzle positions, straight and rotated 90 degrees**
- **Panels may be opened to view interior detail**
- **Weapon carrier Trolley included for dioramas**
- **American version with rocket pillars included**



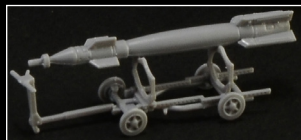
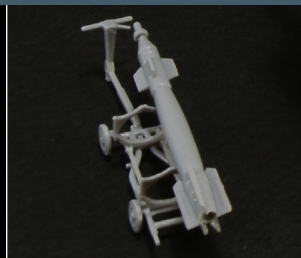




**American version  
with rocket pillars included**



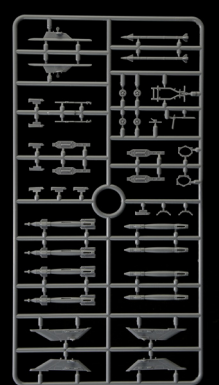
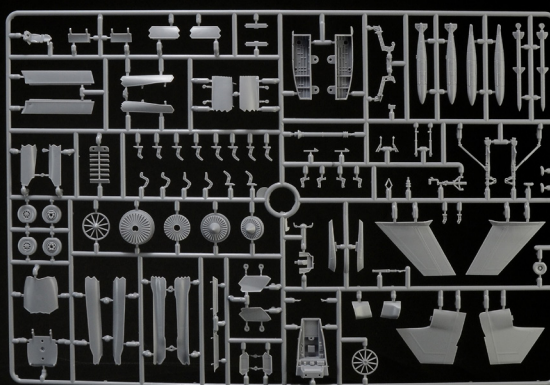
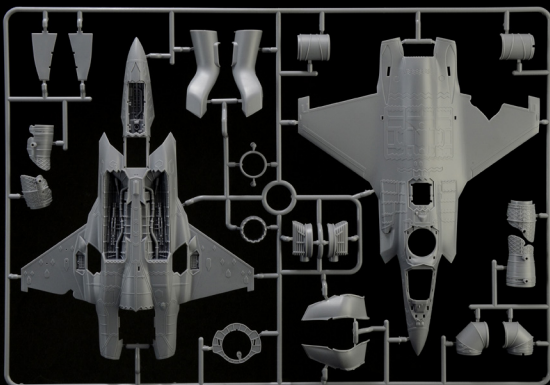
**Engine with two Thrust Nozzle positions,  
straight and rotated 90 degrees**



**Weapon carrier Trolley  
included for dioramas**



**Panels may be opened  
to view interior detail**



**Hight Quality kit**

